

# Plymouth Early Childhood Center

2024-2025

School Committee Presentation



# Current Enrollment



	2020-2021	2021-2022	2022-2023	2023-2024	2024-2025
<b>October</b>	<b>161</b>	<b>202</b>	<b>201</b>	<b>236</b>	<b>252</b>
Enrolled	142	189	191	219	225
Services Only	19	13	10	17	26
<b>June</b>	<b>215</b>	<b>239</b>	<b>267</b>	<b>290</b>	<b>289</b>
Enrolled	192	223	244	254	259
Services Only	23	16	23	36	30
					*2024-2025 June values are current enrollment as of 4-30-2025
					22 students/7.6% are Multi Language Learners

# Available Spots

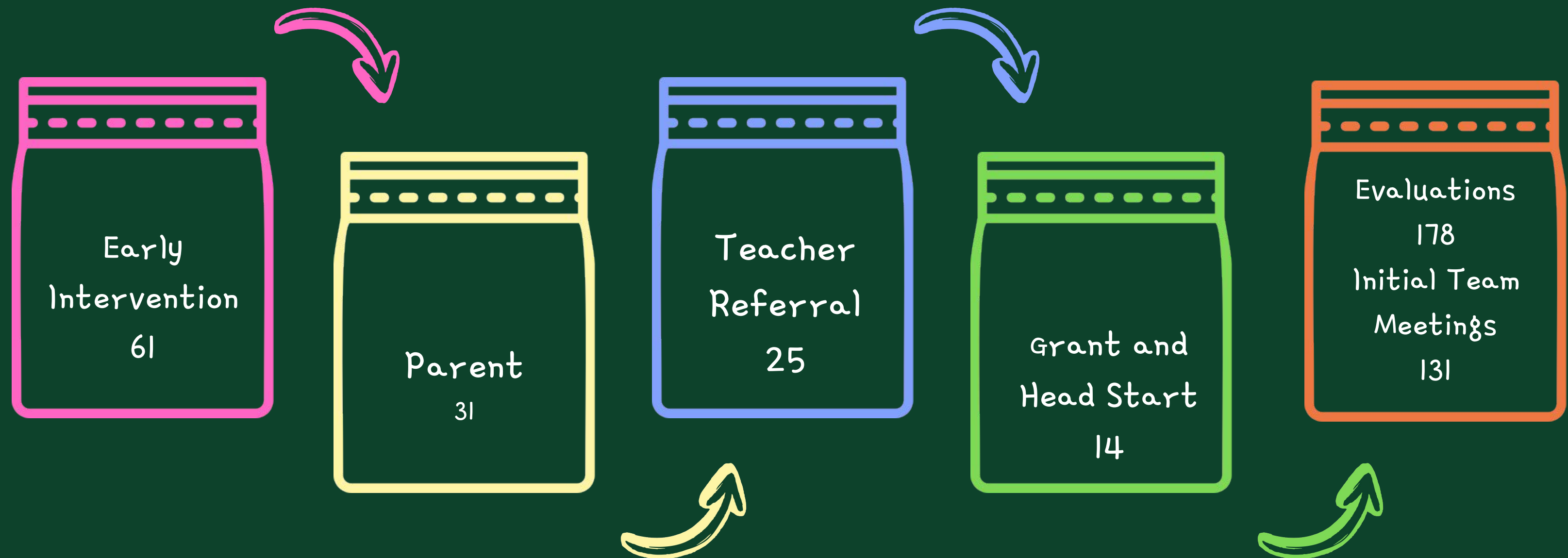
Integrated Model - 7 IEP spots and 8 Community Peer Spots = class size of 15

Over the past few years have added 4 new teachers - This has created 34 additional IEP spots and 40 peer spots

Total Number of  
Special Education Spots  
133 integrated  
27 Sub Sep  
Total : 160

Total Number of Peer  
Spots  
152

# Referral Process



As of 4/8/25



# OUR TEAM

Teachers

Paraprofessionals

Related Service  
Providers

RBT and BCBA

Special Education  
Department Head

Front Office  
Staff

Grant Team

Nurse

# A Continuum of Services

①

OUTREACH

②

INTEGRATED  
½ day model  
(2,3,4 sessions  
per week)

③

SUBSTANTIALLY  
SEPARATE  
&  
HYBRID MODEL  
(Full DAY)

④

GRANT AND  
HEAD START

# Community Support

1

CPP1

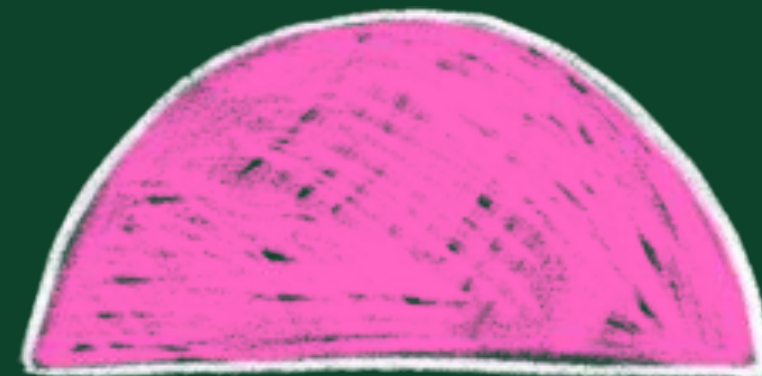
Community Preschool  
Partnership Initiative

2

Head  
Start

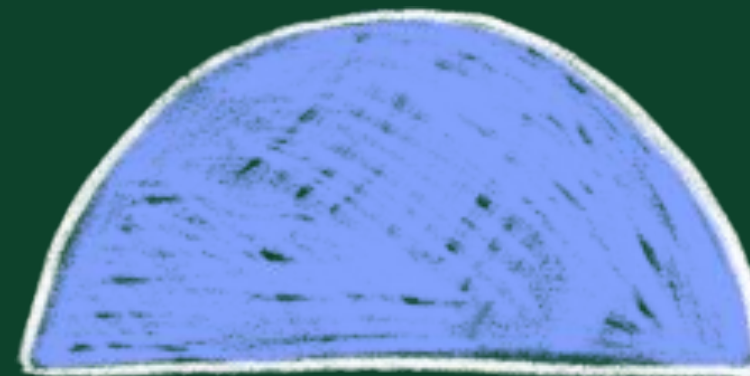
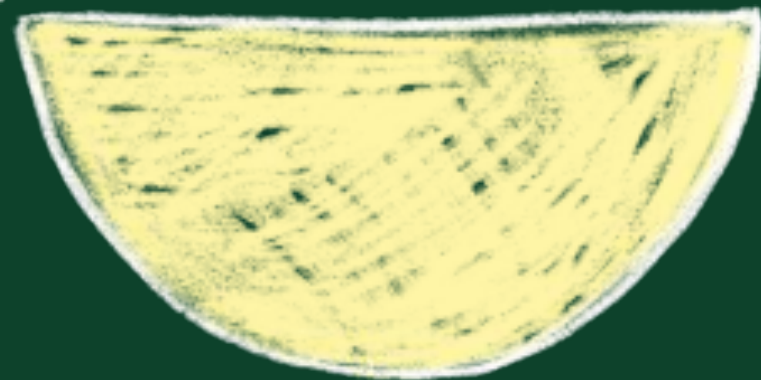
Special Ed teacher  
and SLP  
2x per week

# CPPI



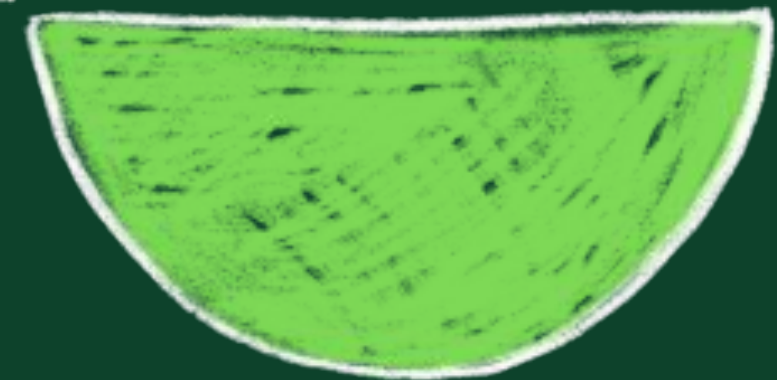
Grant Team

Community  
partners  
Bright ideas  
Tiny Town

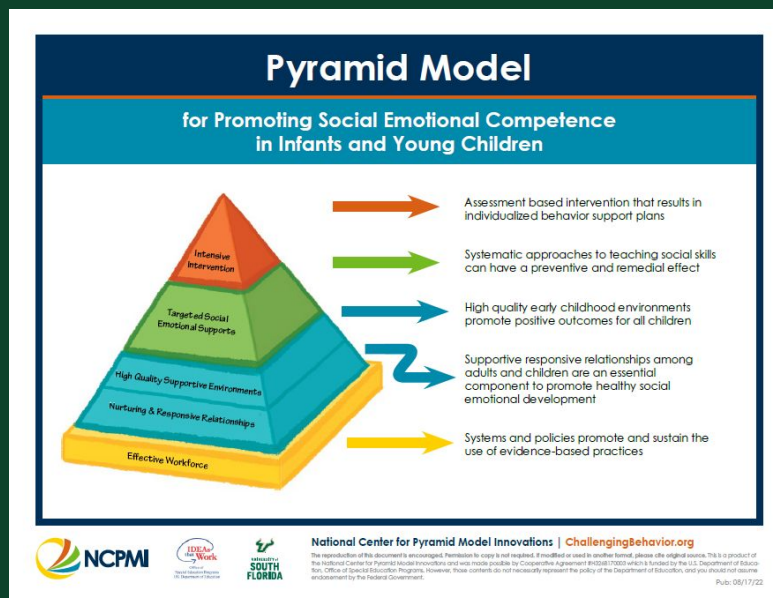


Other Centers we  
service  
Redbrook YMCA  
Hop, Skip and Jump

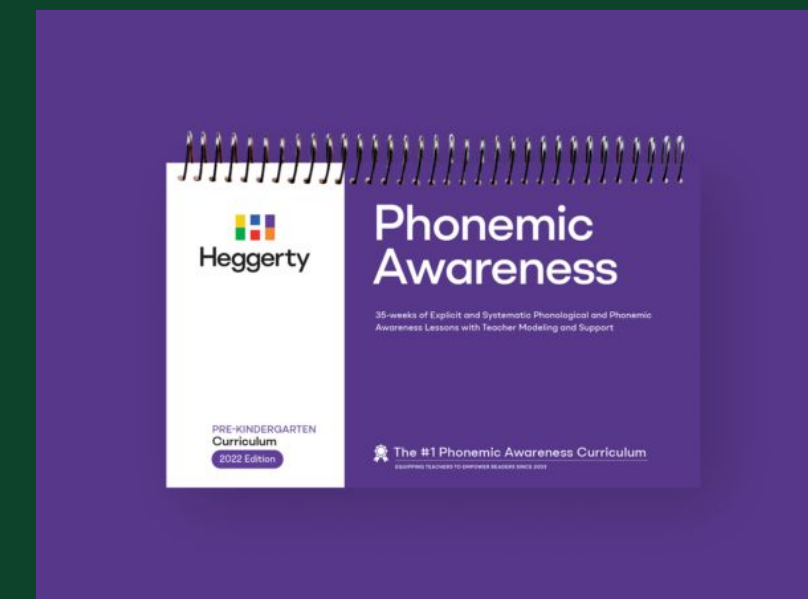
Preparation for  
Grant Application







# Professional Development



## Curriculum

## Development

3 teachers worked in south shore area consortium building inquiry based curriculum units

## Pyramid Model

Currently participating in a 30 hour training in the Pyramid Model. The focus is on the tiers of social/emotional development interventions

## Heggerty

Two teachers piloted this year.

Will present experience and findings to teachers

## Transitions

- Last year teachers visited K classrooms
- This year Substantially Separate program teachers visited k programs
- Virtual meetings held in Spring with each Elem school



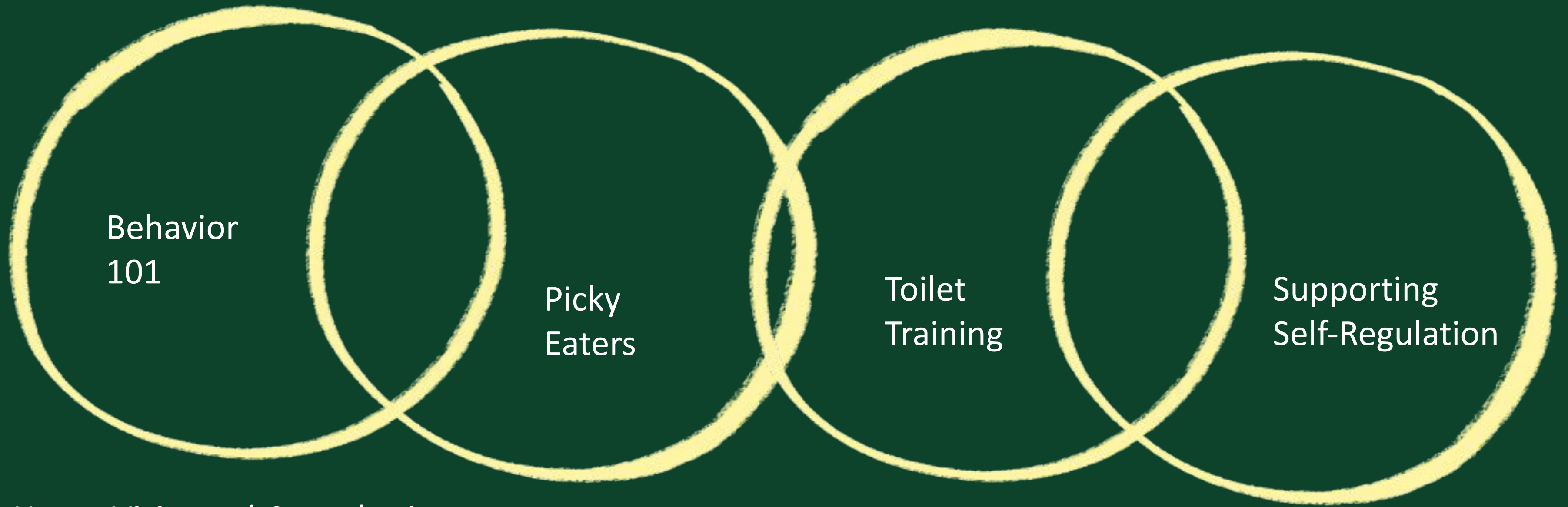
# Manomet Satellite

- ① Morning and afternoon session
- ② Waitlist for Manomet for next year
- ③ 5th grade helpers at the end of the day





# Parent Training Series



Home Visits and Consultations

# Community Provider Training Series



Behavior 101

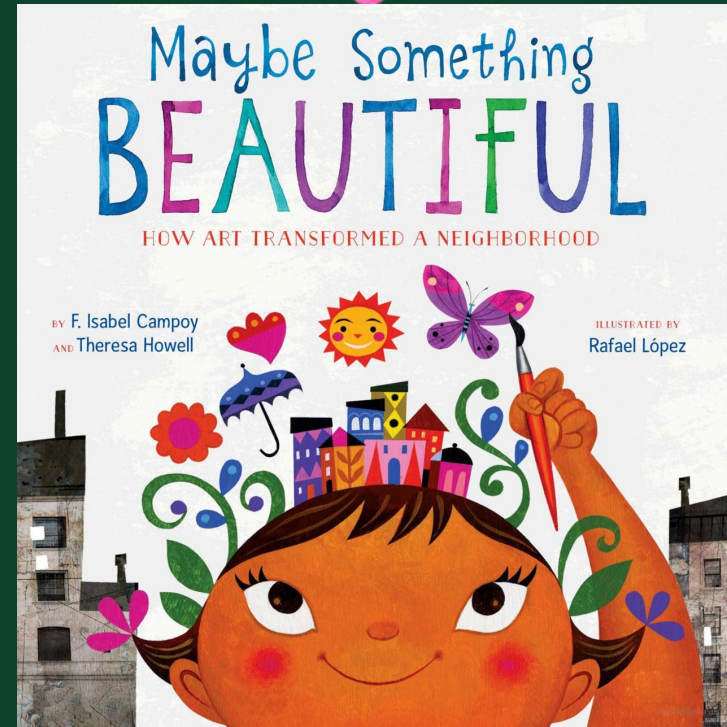
Jamie  
Maccaferri

Self-Regulation in  
the Preschool  
Classroom

Darlene Bancroft



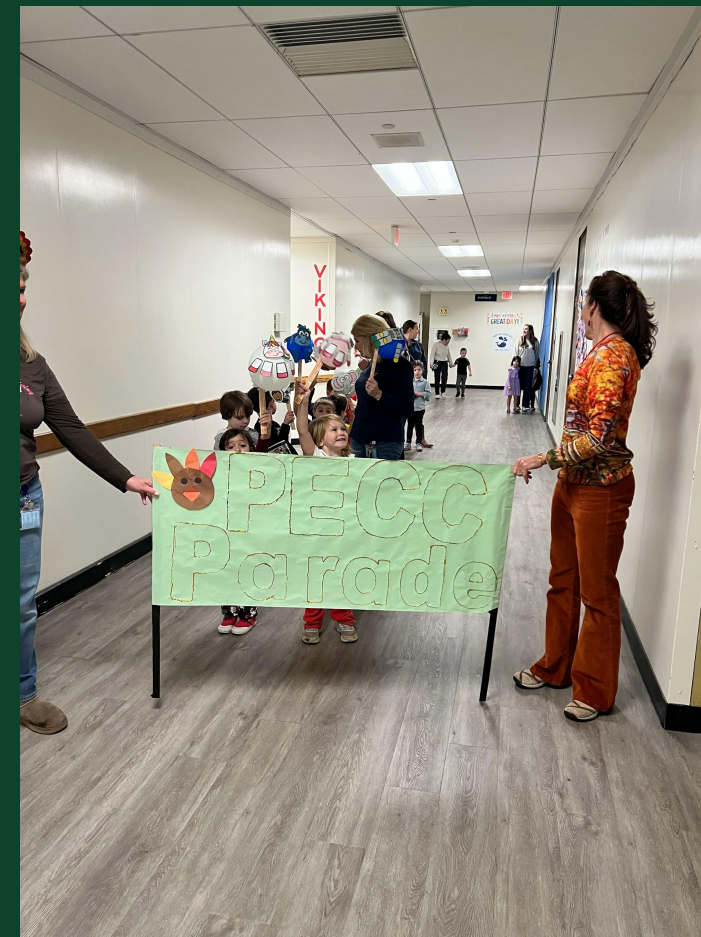
# One Book, One School





# It Takes a Village

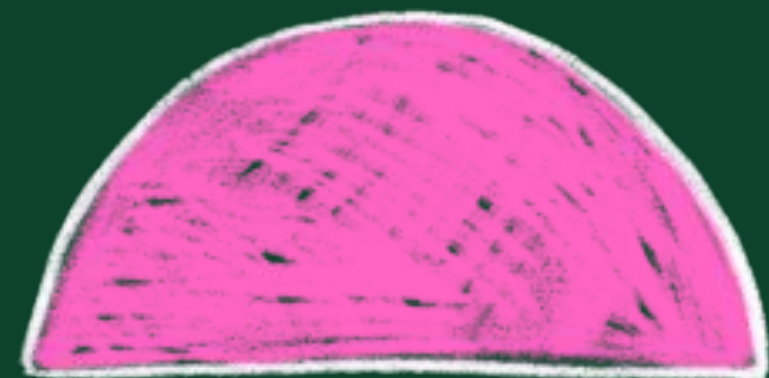
Yellow Tulip Project  
Babysitters Club/Preschool Pals  
Holiday Concert  
Science Activities  
Planetarium  
Allied Health Interns





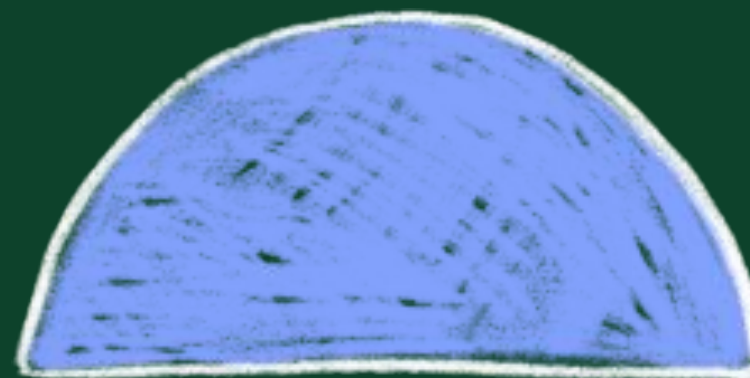


# PTA



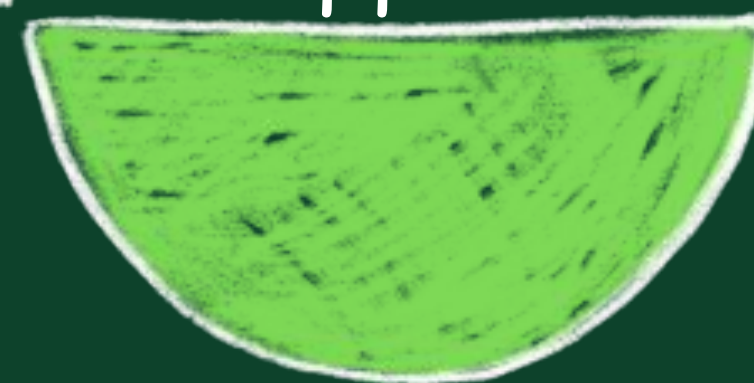
Fundraisers

Enrichment



Family Movie  
Night

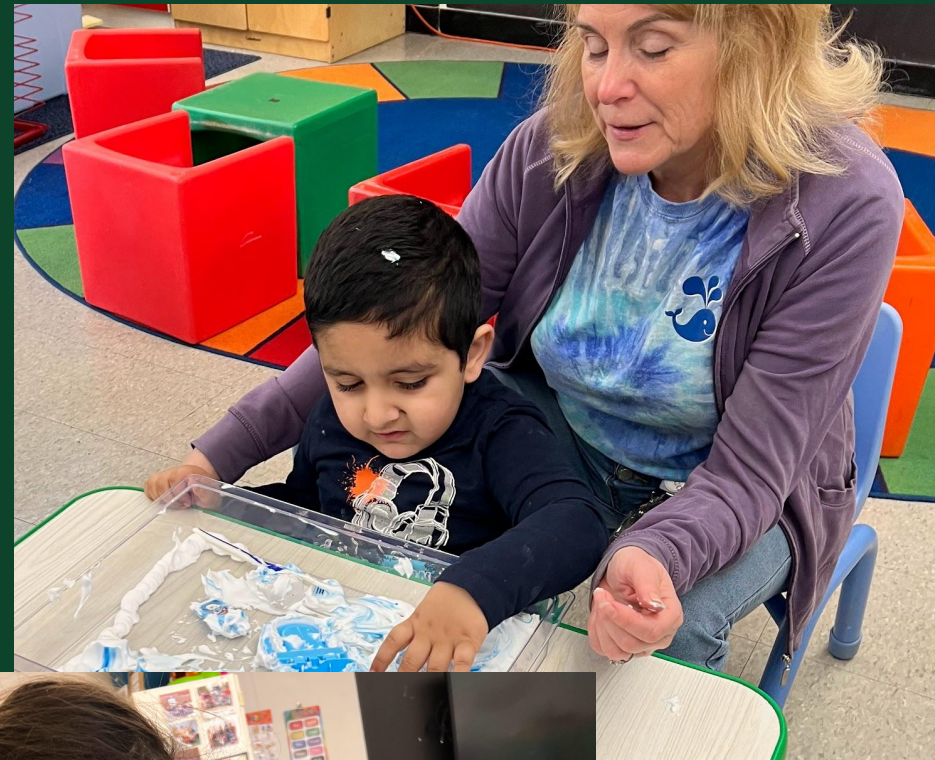
Teacher  
Support



Thank you to our T-Shirt Sponsors: Plimoth Patuxet Museums, King Construction & Renovations LLC, Skin By Sarah Beauty Studio, Pilgrim Fence, Sweet Grace & Company



# The Best Part of Our School





Thank  
You!

